

lenovo® **FOR**
THOSE
WHO DO.

LENOVO® TRANSITION SERVICES INPLACE MIGRATION

According to Microsoft, 88% of corporate customers will migrate to Windows® 7¹. Let Lenovo's InPlace Migration Service help you migrate now, and don't wait for Windows® 8. If you're asking yourself, "How hard can it be?".... here's your answer.



Because of the complexity of the task, the vast majority of organizations call upon external service providers for:

- Planning & Management
- Application Compatibility
- Field Execution

Not only is the migration process resource intensive, it's costly. According to Gartner, migrating from XP to Windows® 7 can cost \$1,035 to \$1,930 per user². While the cost to move a well-managed environment can be half the cost.

LENOVO'S RAPID, SAFE MIGRATION PROCESS DISCOVER, CONTROL, AUDIT, AUTOMATE

We are not looking to reduce desk-side support.... we are looking to eliminate it!

Lenovo's InPlace Migration (IPM) Solution reduces the workload of undermanned IT support groups by providing zero-touch OS migration tools. IPM eliminates the pain points and ensures a fast, consistent, successful migration from Windows® XP to Windows® 7 Professional. Users get on the path to productivity with the full Lenovo® Enhanced Experience for Windows® 7 as quickly as possible.

This automated migration solution consists of three key components which provide all that you need to assess readiness, schedule migrations, and report on the success of the migration process.

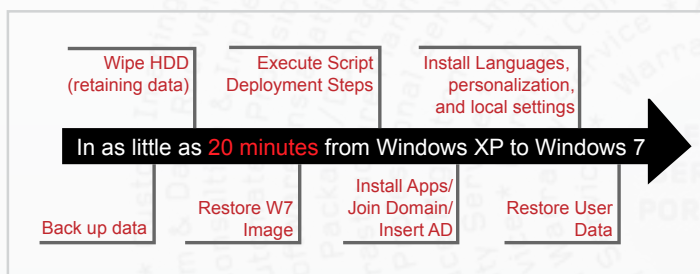
- Software modules for device discovery, hardware and software inventory, software and image distribution, and comprehensive reporting
- An implementation team armed with the best practices and proven methodologies for migrating PCs to Windows® 7
- An image creation and delivery service with 20+ years of experience provisioning enterprise images

Now you can control, audit and automate the deployment of Windows® 7 with confidence.

DISCOVER & CATEGORIZE	CONTROL & INFORM	AUDIT & ALERT
Hardware discovery	Deployment Scheduler 1. Visual process management 2. Notification & confirmation	Migration verification
Software inventory	Image distribution	Real-time status updates
Progressive categorization	Migration launch	Visual process management
Plug-in console (No residual footprint)	Exception handling	Reporting & documentation
	Pre-populated ITIL processes	
	vPro provisioning	

INPLACE MIGRATION TOOLSET

- Full OS installation
- Application installation
- User, network, security settings
- Data & personality migration
- Migrate from XP or Vista®
- No legacy footprint



TANGIBLE BENEFITS OF INPLACE MIGRATION

- 30% – 40% lower migration costs
- 50% faster migration
- Lower risk
- More consistent results

CUSTOMER CASE STUDY

An industry-leader with products and solutions across approximately 160 countries was in need of a major operating system and hardware upgrade. The company turned to its PC technology partner Lenovo to deliver the hardware, system migration tools and global service they needed.

The Lenovo® Imaging Technology Center helped create a customized image, and conduct an enterprise-wide pilot for the migration of the laptop software image. The large scale migration, using Lenovo's System Migration Assistant tool, moved all data and applications settings to the correct locations in the deployed Windows® 7 solution.

For desktops, the Lenovo Imaging Technology Center developed an InPlace Migration solution to transition from Windows® XP to Windows® 7, while retaining the user's local data. Each system's migration was completed in minutes. This created a unified migration process for laptops and desktops across the environment which was essential for a company this large.

The company was able to meet its goal of equipping most of its 50,000 employees with new PCs within nine months. Individual time spent on the migration was reduced by 75% globally without the need for desk-side support.

Lenovo's InPlace Migration Service is part of a comprehensive portfolio of award-winning services supporting the entire lifecycle of your PCs. For more information on these, or any of Lenovo Services, visit www.lenovo.com/services or call your Lenovo sales representative

1-855-253-6686

Lenovo Services